



2024 ENA / APGA Seminar

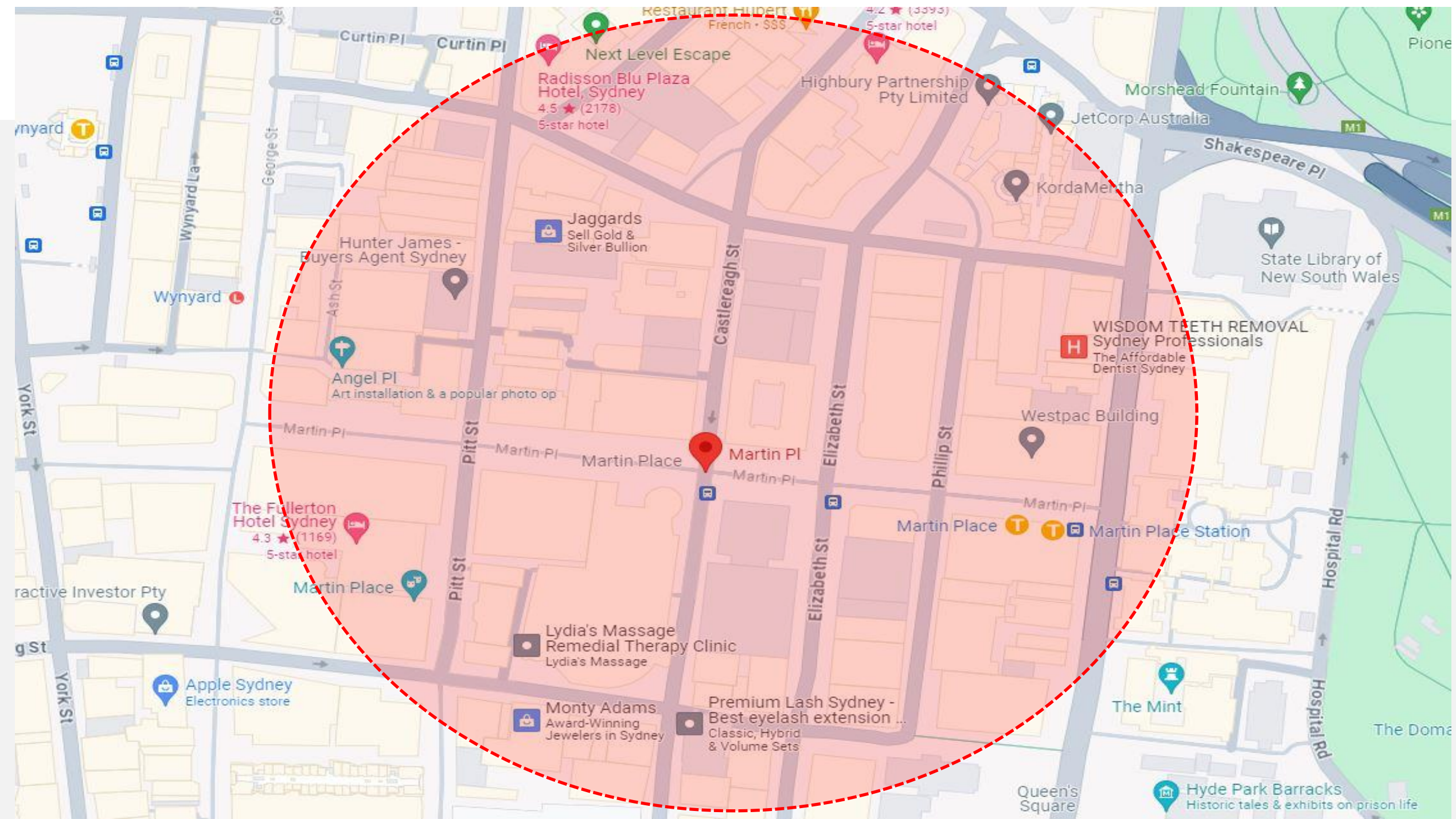
Working in urban CBDs

Besim Geusher – Gas Distribution Manager, Zinfra

Martin Place, Sydney



[9news.com.au - Gas leak in Sydney CBD](https://www.9news.com.au/news/sydney/gas-leak-in-sydney-cbd/)



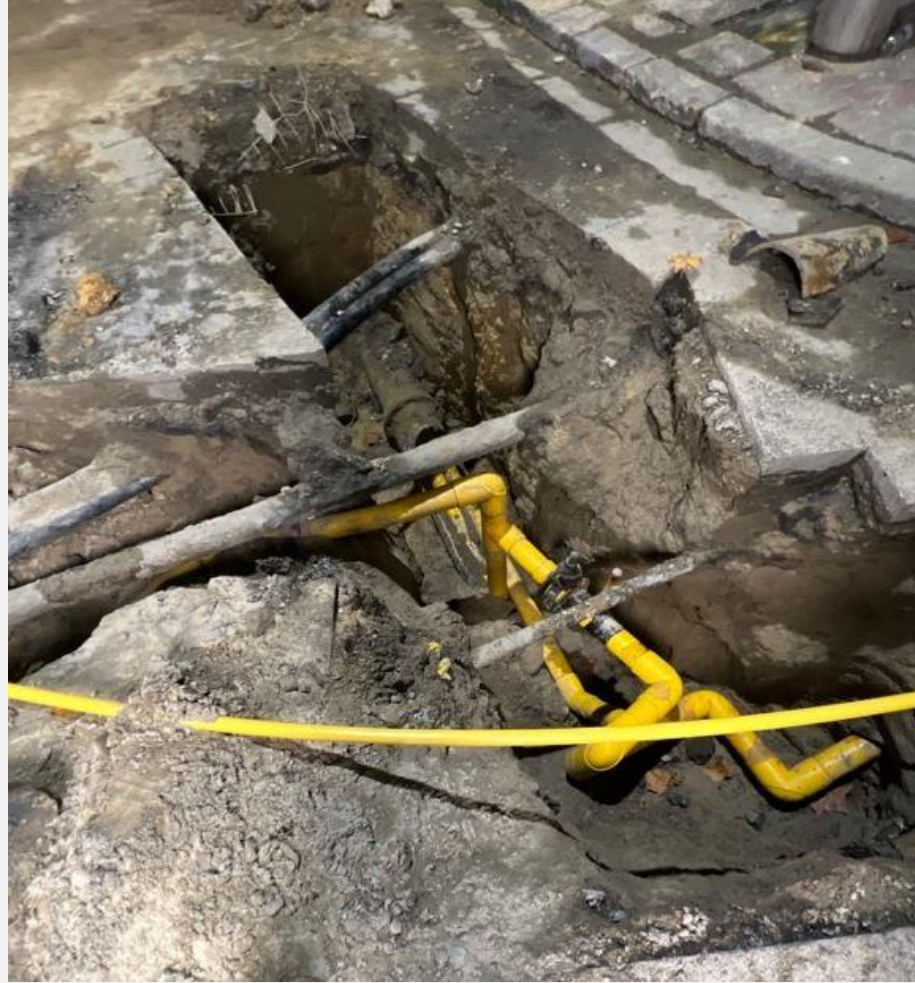
Shallow Mains



Volume of Night Works



Unmapped Services



Unmapped Services



Geospatial Improvement



Environmental vision

Geospatial data is the latest data set to be introduced to JGN Viewer. This the first layer to be added with a vision to build on our environmental capabilities moving forward.



Hazards near me

NSW Government has introduced a new Hazards web service. We now stream this into JGN Viewer to provide an integrated view of fire, flood and other alerts with the JGN network area.



Building bridges to data

The link between JGN Viewer and Drawbridge has now been re-established so you can easily move between JGN Viewer and Drawbridge data vaults.



Faster Meter listings

Being able to spatially extract a gas meter/connection report, via a user defined JGN Viewer interaction, allows for rapid visibility of potential impact to both planned and unplanned events. This was further enhanced in March 2022 to assist JGN EMT requirements.



Accurate diagnosis

"Diagnosis is three fourths the remedy". In January 2023 we rolled out the Realworld Diagnostics application, which is capturing system activity and user activity across JGN GIS and JGN GIS systems. Using SPARK dashboards we can closely monitor and diagnose system issues and performance etc.



Look up and live

Each year, serious injuries occur in Victoria as a result of equipment contacting powerlines. By serving our JGN GIS data to the LUAL website we now support the aim to increase public safety and reduce the potential for asset damage.



Prol and Isolation Sections

Changes introduced by signal GIS in March 2023 will significantly assist in the operation and management of the JGN network. Two new objects were added to show the boundaries of Prol sections and Secondary Isolation sections.



Branching out to VMS

We implemented a new integration to the new Vegetation Management System (VMS) and collaborated on the tender, vendor selection, detailed design and build of the Project. This replaces the previous legacy VMS system and integration.



Cloud Optimisation-Non PRD servers

Working with the Digital Cloud Engineering team to optimise the arrangement of GIS servers to reduce costs. Non PRD servers are in scope for reduced backups, turning off when not in use and rightizing of instance.



Asset Inspection upgrade

The Business case for FieldSmart replacement was approved on 23 April. The Project has commenced to move Asset Inspection to AEC.



GSA warehouse

JCH Spatial Data Warehouse is underway. Stage 1 has seen the successful implementation of the GSA warehouse for JCH and there is further work to ensure data is archived using best practice data warehouse techniques. JCH GIS will be on the agenda next.



Sinking feeling

Following the recent Mine Subsidence event at Waltham, we have been able to publish the Mine Subsidence Districts to JCH Viewer, as provided by HSW Spatial Services. This enhancement will help to inform planning, risk management & operational activities.



Cloud Optimisation-Non PRD Storage

Working with the Digital Cloud Engineering team to optimise the arrangement of GIS servers to reduce costs. Non PRD servers are being "rightized" for S3 Volume Storage.



Location accuracy improvement

Chris P made changes to the Heatmap Aerial Imagery configuration so that the Imagery would better align with the authoritative landscape. This will help planners and Engineers etc as they make decisions using GIS + Imagery.



Gas Isolable Sections

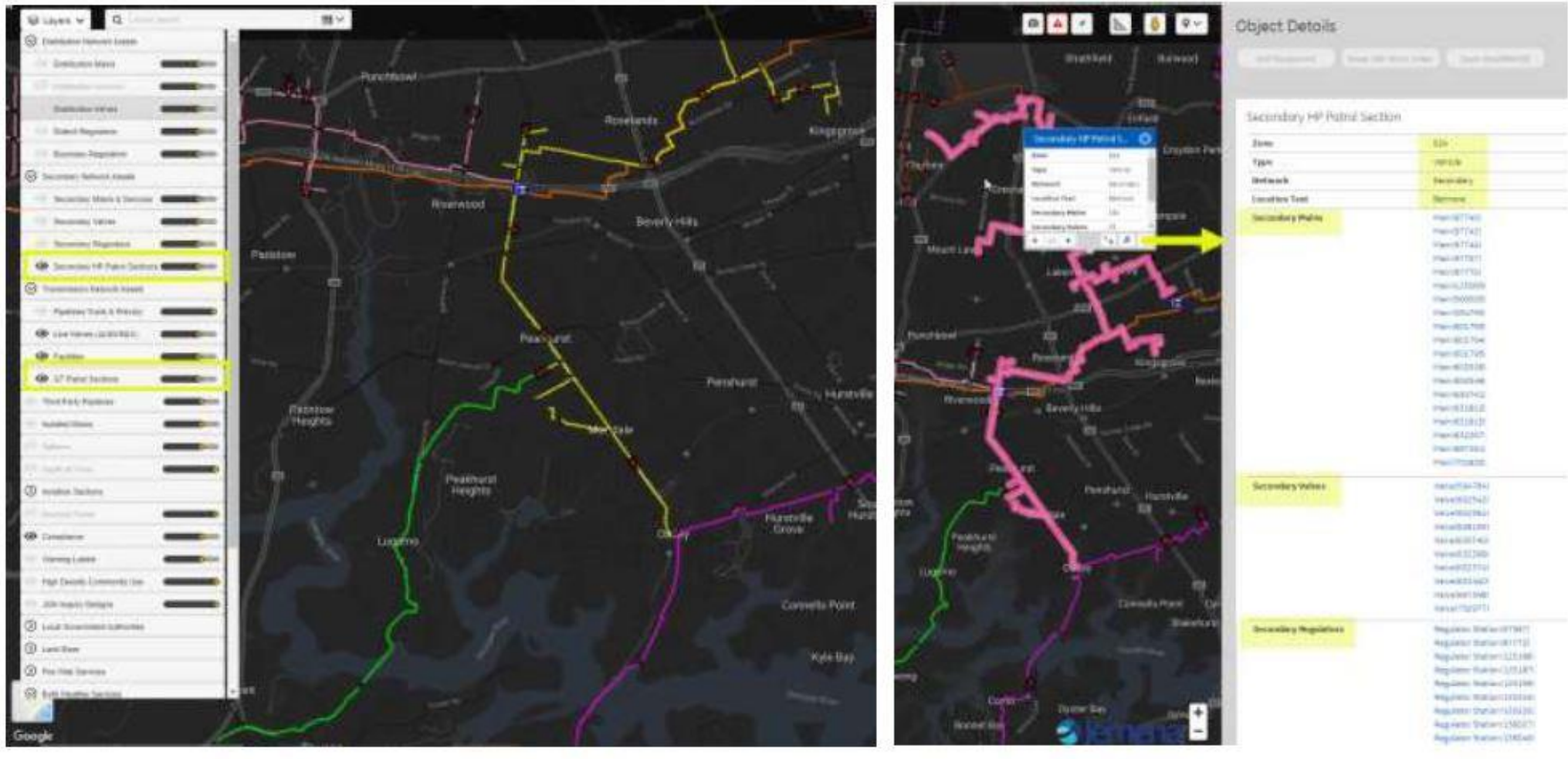
Building on the new Geospatial Analytics platform (which started in Dec/Jan), our vendor partner has created a new view of the JCH gas Distribution network, which colour codes the network into isolable sections. If a section is disconnected it shows as RED.



GT Patrol Sections

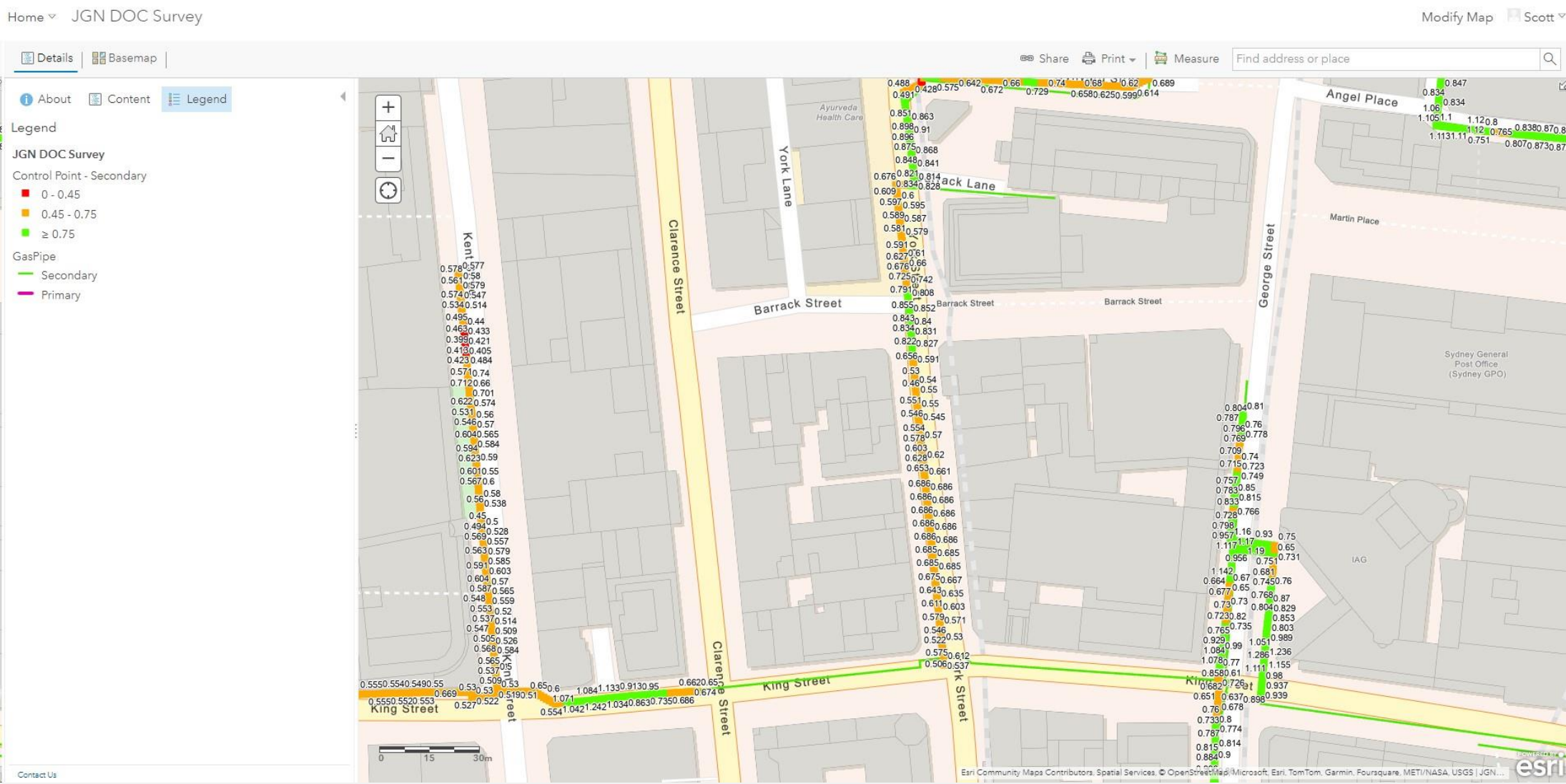
Extending work done to deliver Patrol Sections for Gas Distribution in March 2023 we have completed Patrol Sections for Gas Transmission.

Geospatial Improvement



Trunk Mains, Primary, Secondary & Critical MP Mains Sectors

Geospatial Improvement



Geospatial Improvement



Questions

